

# EDWARDS AQUIFER AUTHORITY

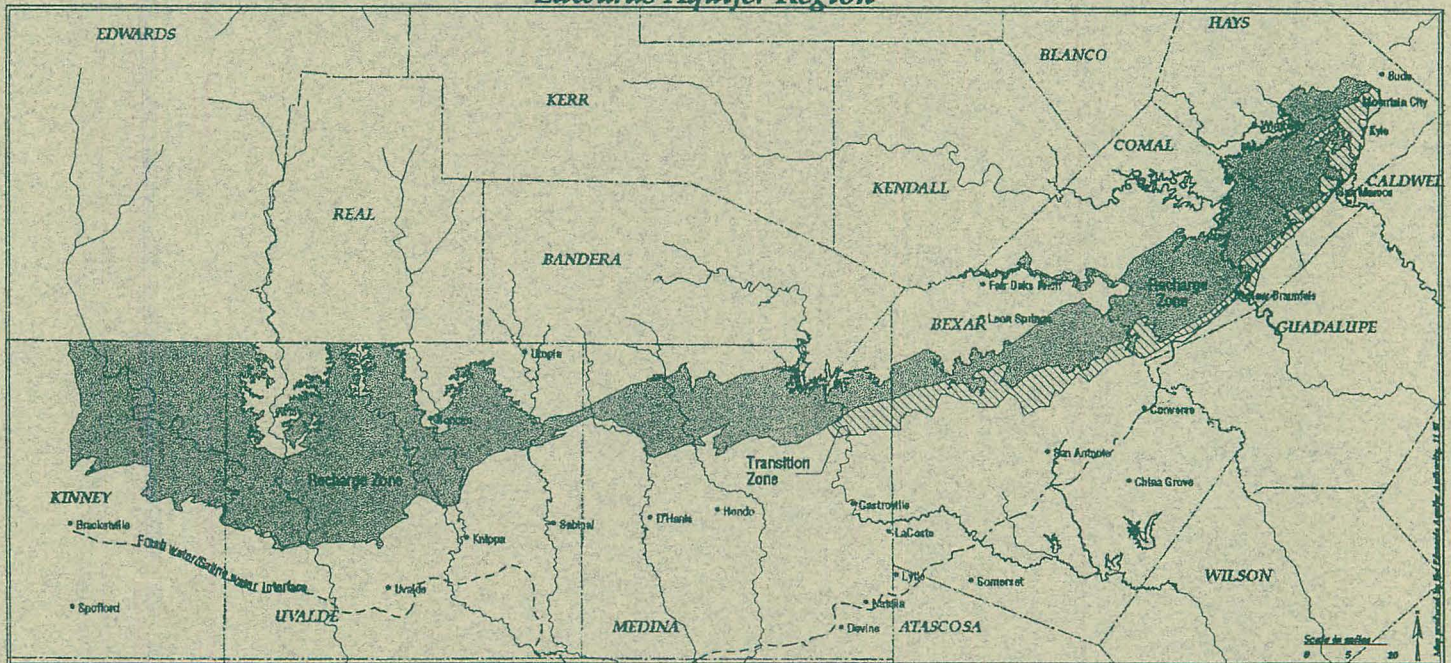
1615 N. St. Mary's  
San Antonio, Texas

Report 97-01

## PLATES

### Edwards Aquifer Hydrogeologic Report for 1996

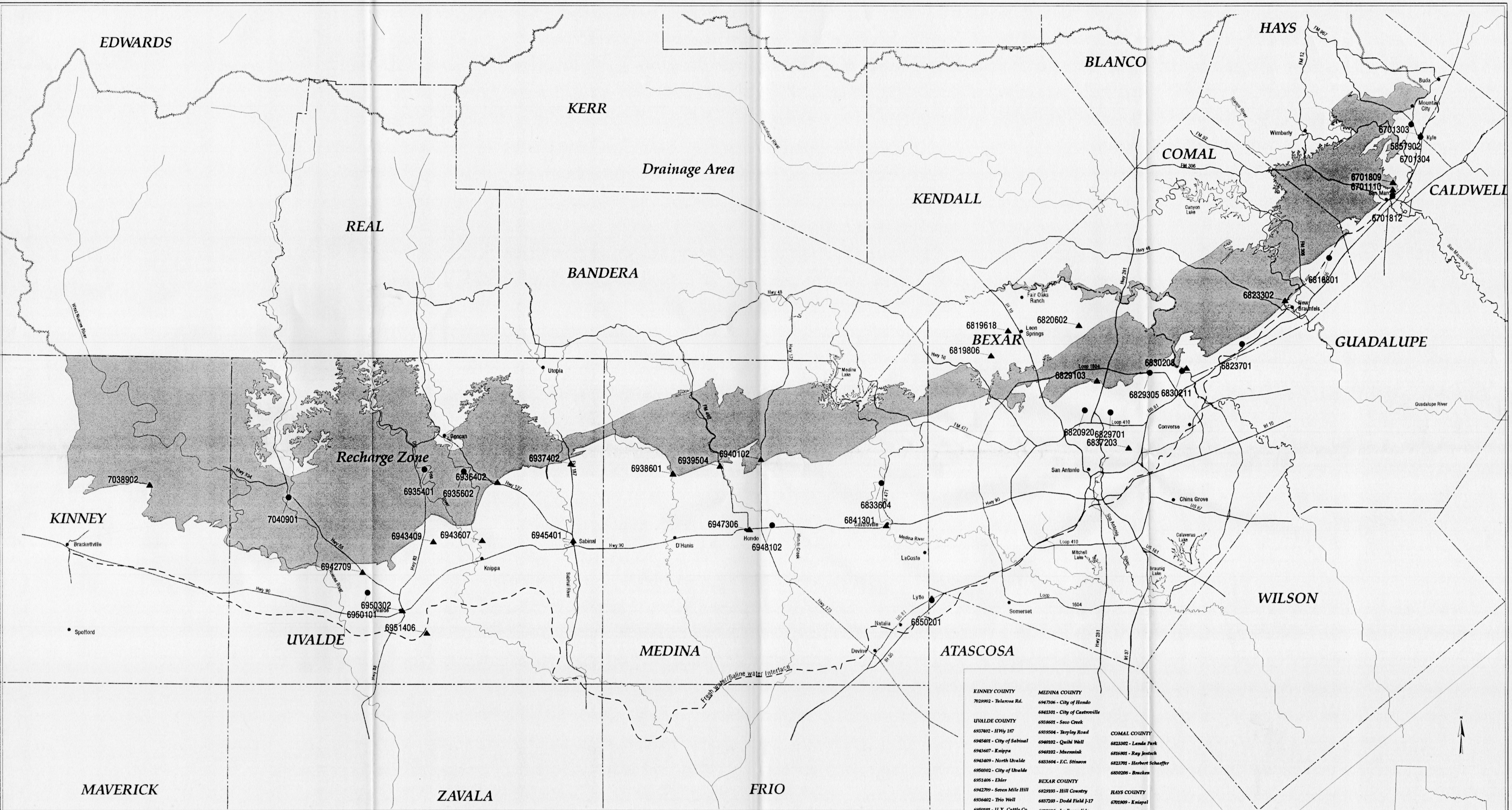
*Edwards Aquifer Region*



Prepared by: The Water Resources Team



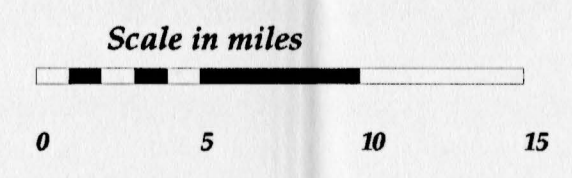
recycled paper



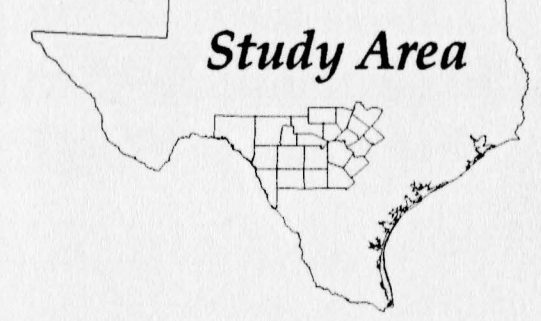
**Plate 2.1 -  
Water Level Observation Network.**

**Explanation**

- ▲ Continuous Water Level Monitoring Sites
- Tape-down Water Level Monitoring Sites
- ▬ Fresh Water/Saline Water Interface
- ▬ Drainage Area Boundary
- Recharge Zone



<b>KINNEY COUNTY</b> 7028902 - Tularosa Rd.	<b>MEDINA COUNTY</b> 6947306 - City of Hondo 6941301 - City of Castreville 6938601 - Seo Creek 6939504 - Turley Road 6940102 - Quili Well 6948102 - Muesink 6948102 - Muesink 6833604 - F.C. Stinson	<b>COMAL COUNTY</b> 6823302 - Landa Park 6818801 - Ray Jentsch 6823701 - Herbert Schaeffer 6830208 - Bracken
<b>UVALDE COUNTY</b> 6937402 - Hwy 187 6945401 - City of Sabinas 6943607 - Knippa 6943409 - North Uvalde 6950302 - City of Uvalde 6951406 - Ehler 6942709 - Seven Mile Hill 6936402 - Trio Well 6950101 - U.X. Cattle Co. 7040901 - Nueces River 6835602 - Frio River 6835401 - Livingston	<b>BEXAR COUNTY</b> 6829103 - Hill Country 6837208 - Dodd Field J-17 6839806 - La Escondida 6820602 - Blanco Road 6819618 - Boerne Stage Rd. 6830211 - Cibola 6820920 - West Avenue 6829701 - Airport 6850201 - City of Lytle 6829305 - Judson Road	<b>HAYS COUNTY</b> 6701809 - Knispel 5857902 - Paul Gregg 6701304 - City of Kyle 6701812 - San Marcos BWL "B" 6701303 - City of Kyle 6701110 - Southwest Tx Farms



Map produced by the Edwards Aquifer Authority, GIS Dept. 09/97

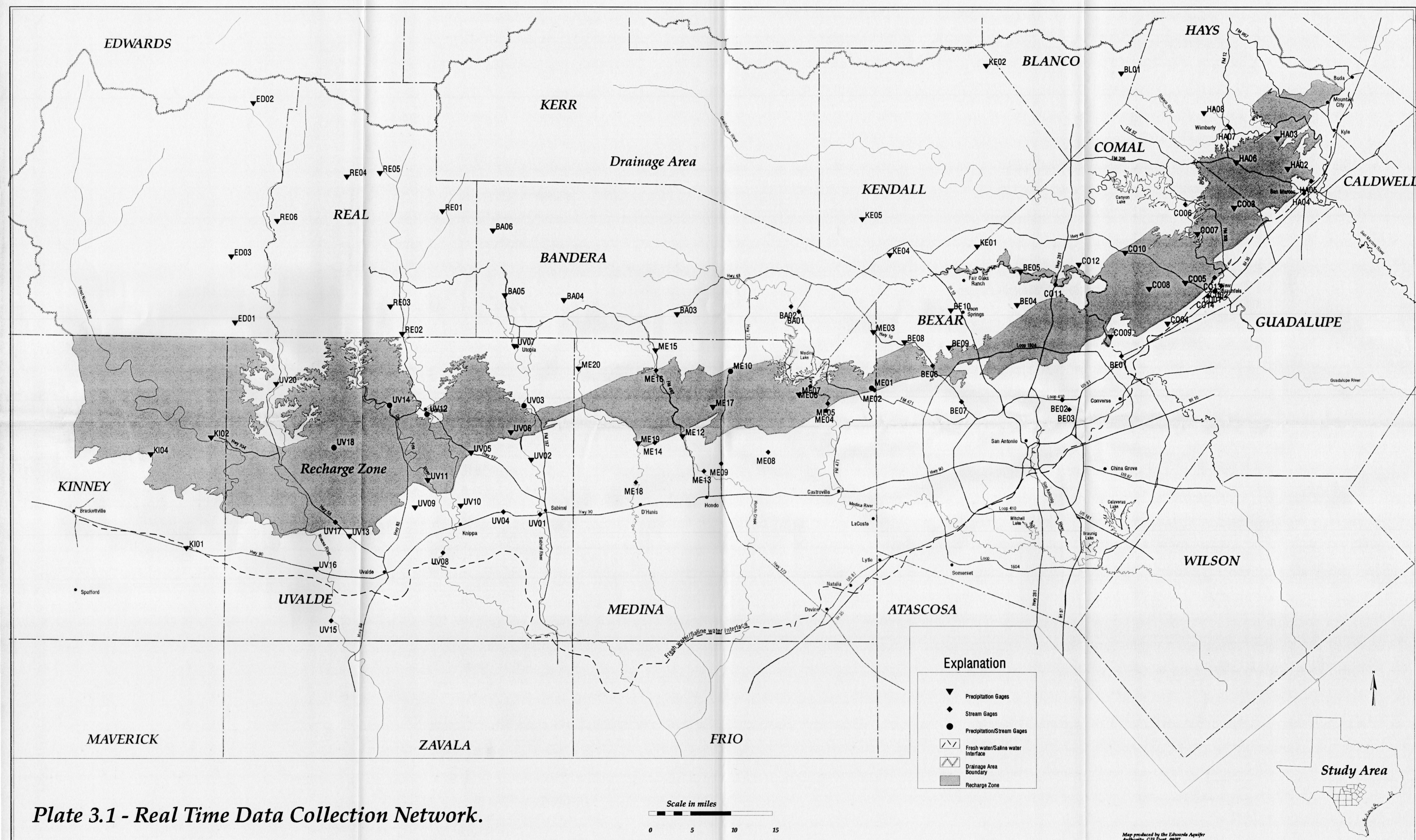
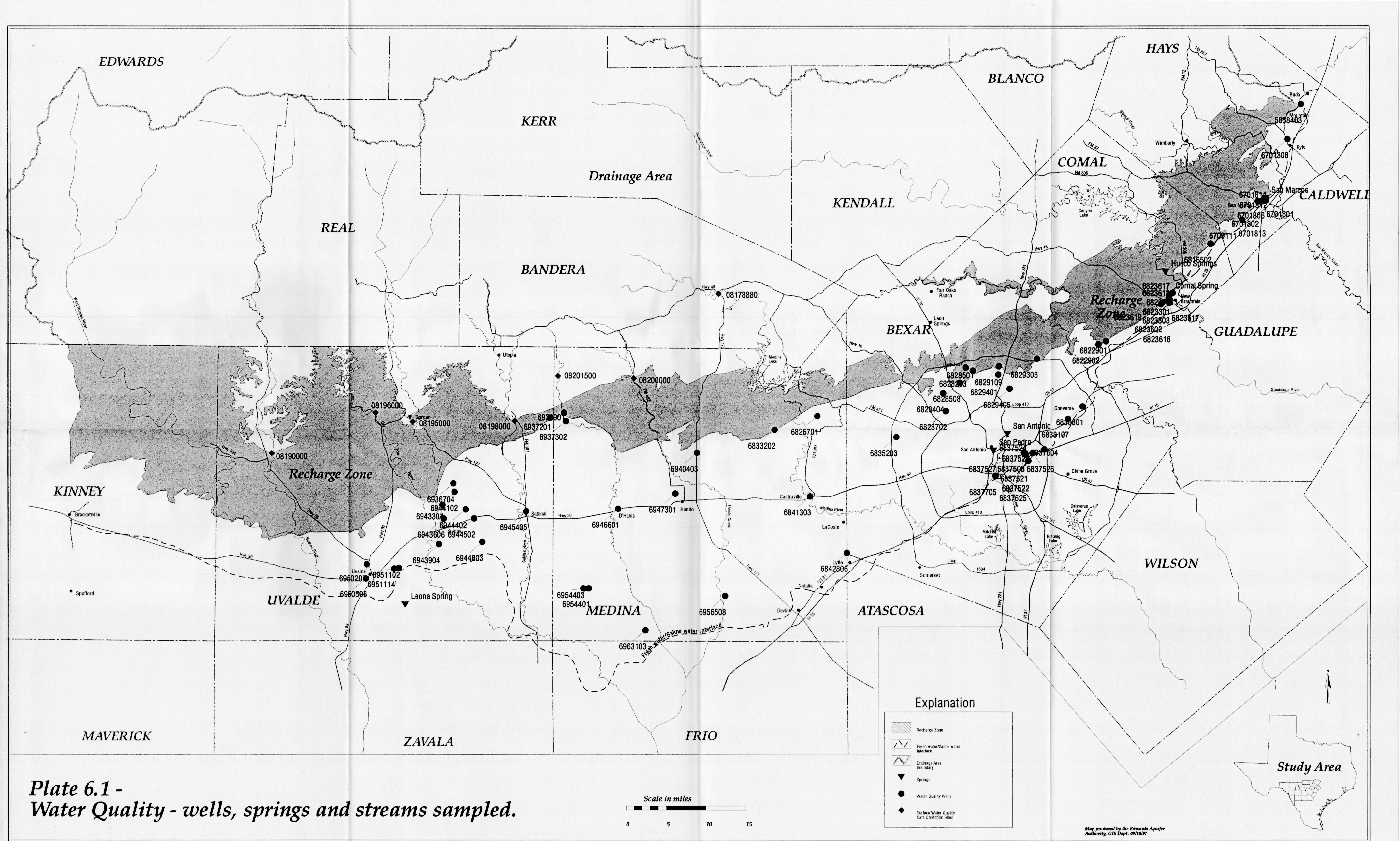
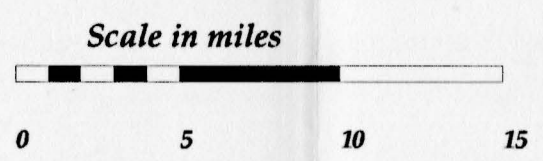


Plate 3.1 - Real Time Data Collection Network.

Map produced by the Edwards Aquifer Authority, GIS Dept. 09/97



**Plate 6.1 -  
Water Quality - wells, springs and streams sampled.**



**Explanation**

- Recharge Zone
- Fresh water/Saline water interface
- Drainage Area Boundary
- Springs
- Water Quality Wells
- Surface Water Quality Data Collection Sites

Map produced by the Edwards Aquifer Authority, GIS Dept. 09/10/97